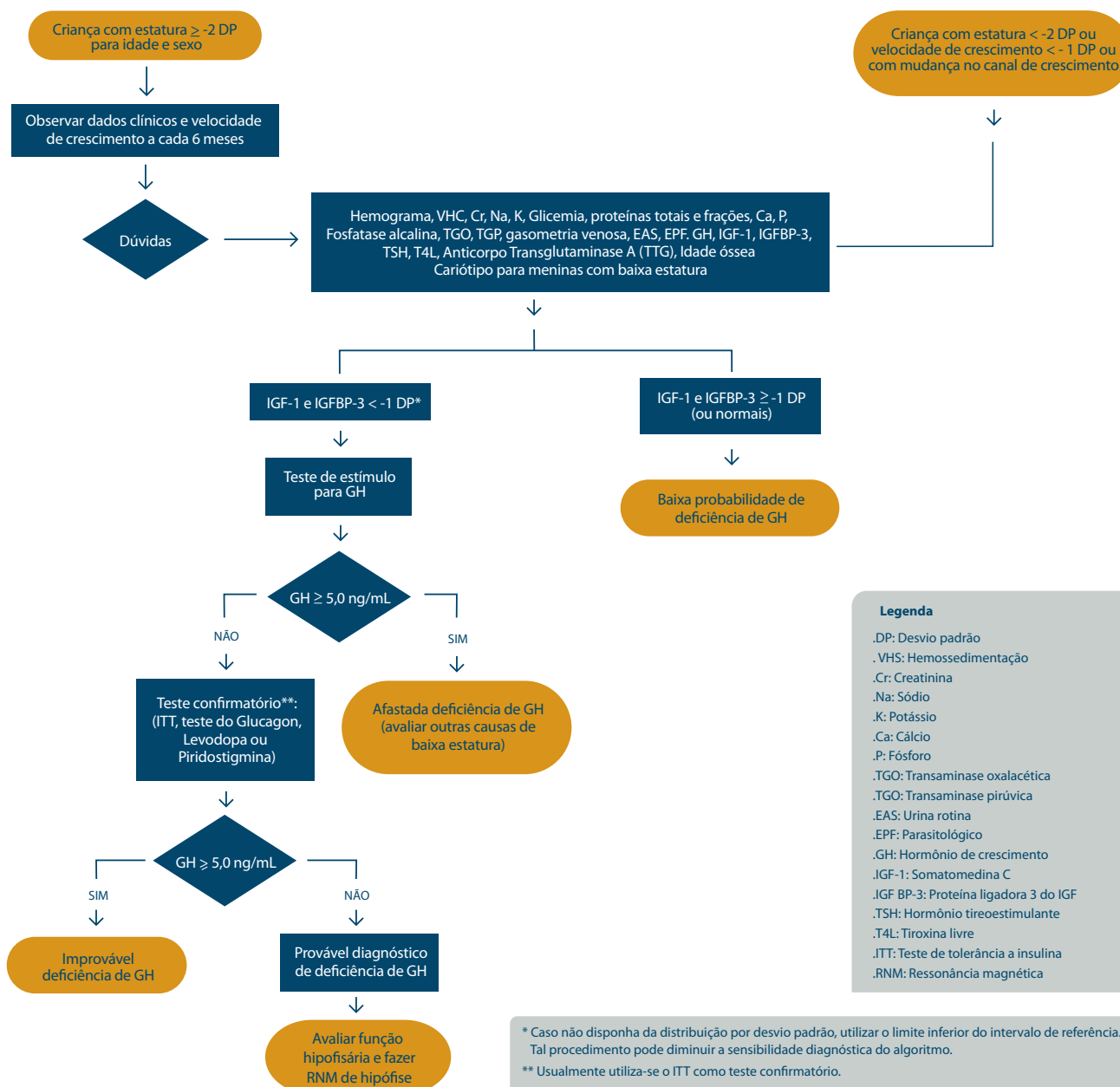


BAIXA ESTATURA



Referências Bibliográficas:

1. Sociedade Brasileira de Pediatria, Sociedade Brasileira de Endocrinologia e Metabologia. Projeto diretrizes: Baixa estatura por deficiência do Hormônio de Crescimento: Diagnóstico. Disponível em <www.projetodiretrizes.org.br>.
2. Rochiccioli P, et al. Statistical study of 5473 results of nine pharmacological stimulation tests: a proposed weighting index. Acta Paediatr 1993;82:245-48.
3. Marin G, Domené H, et al. The effects of Estrogen Priming and Puberty on the Growth Hormone Response to Standardized Treadmill Exercise and Arginine-Insulin in Normal Girls and Boys. J Clin Endocrinol 1994;79:537-41.
4. Nunez S, Municchi G, et al. Insulin-Like Growth Factor I and IGF-Binding Protein-3 Concentrations Compared to Stimulated and Night Growth Hormone in the Evaluation of short Children- A clinical Research Center Study. J Clin Endocrinol 1996;81:1927-32.
5. Juul A, Kastrop K, et al. Growth Hormone Provocative Retesting of 108 Young Adults with Childhood-Onset GH deficiency and the Diagnostic Value of Insulin-Like Growth Factor I and IGF-Binding Protein-3. J Clin Endocrinol 1997;82:1195-1201.
6. Rakover Y, Lavi I, et al. Comparison Between Four Immunoassays for Growth Hormone Measurement as Guides to Clinical Decision Following GH Provocative tests. Journal of Pediatric Endocrinol 2000;13:637-43.
7. GH Research Society. Consensus Guidelines for the Diagnosis and treatment of Growth Hormone Deficiency in Childhood and Adolescence: summary statement of the GH research society. J Clin Endocrinol 2000;85:3990-93.
8. Silva E, Silhessarenko N, et al. GH Values after Clonidine Stimulation Measured by Immunofluorometric Assay in Normal Prepubertal Children and GH-Deficient Patients. Hormone Research 2003;59:229-33.

**Dra. Betânia Moura - Médica
Endocrinologista**
Dra. Flávia Pieroni - Médica Endocrinologista
Assessoria Científica - Julho/2013